

# SHARP

Be Original.

## MX-B467F

Digital Multifunctional System

## A Compact Package with a Full Suite of Business Functions



### Space-Saving Design

With its small footprint\* of 489 x 429.5 mm, this MFP will easily find a niche in your SOHO or larger office. Simply place it on a desk, under a counter, or anywhere that space is limited.

\* The numerical value is for the MFP's base unit only.

### Front USB Port

At the front of the MFP is a USB port, which comes in handy when printing directly from a USB drive—an indispensable function for users who want quick machine access without a PC.

### Ample Paper Capacity

A 250-sheet tray and a 100-sheet multipurpose feeder come standard. Optional 550-sheet trays are available for a total paper capacity of 2,000 sheets.

### Energy Efficient

This MFP comes with scheduled power modes and other energy-management features that reduce power consumption both during active use and during sleep mode.



## Keep your office humming

It's time to onboard a new team member—a space-saving MFP that covers your essential document needs. It comes with an easy user interface that takes the friction out of document jobs. And it adapts to your needs. You can add a wireless LAN feature to expand connectivity, or an OCR option that lets you convert documents and business cards. Simple, secure, and reliable—every step of the way.

### Wireless LAN Connections\*

An optional wireless LAN is available that conforms to the IEEE 802.11 a/ac/b/g/n standards. This lets you connect to the MFP via network infrastructure or via Wi-Fi Direct® for mobile devices. Wi-Fi Direct allows peer-to-peer connection with compatible PCs and mobile devices. This comes in handy when you need quick access to an MFP—for example, when a client is visiting your office. Because this wireless LAN is independent from an in-house network, you don't need to worry about security. What's more, it supports dual-band connectivity for both 2.4 GHz and 5 GHz wireless networks.

\* Requires optional 27X6410.

### AirPrint Compatible

The MFP supports the AirPrint printing feature in Apple's iOS and macOS operating systems. AirPrint automatically detects MFPs and printers on the same network. It then lets you print directly from a mobile device without the need for a printer driver.



### Easy-to-Use Interface

Operating the MFP is easy and intuitive with the 4.3-inch colour LCD touchscreen. In Easy UI mode, the touchscreen displays simple icons for frequently used functions. And with the Preview function\*, you can check the finish of a print and scan job in advance.

\* Requires optional 27X0400.



### Remote Operation

Working from an office-networked PC or a mobile device, users and/or administrators can remotely view the MFP's control panel and operate its features and functions.

### Device Management

Sharp Remote Device Manager\* (SRDM) gives administrators centralised control of their networked MFPs and printers. This software covers system setup, security settings, troubleshooting, and more.

\* Contact a Sharp customer representative for availability and other details.

## Efficient Output

This MFP delivers a fast output of 44 ppm\*. The first copy comes out in 6.0 seconds, saving you valuable time when performing multiple short-run jobs.

\* A4, short-edge feeding; 46 ppm for 8 1/2" x 11" size.

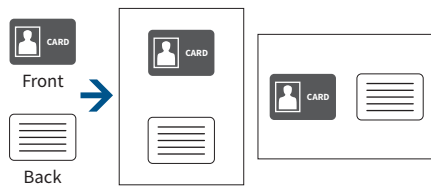


## Versatile Paper Handling

With the main paper tray and multipurpose feeder, the MFP can handle a wide variety of paper—including cardstock, envelopes, and small media like A6-size paper.

## ID Card Copy

The MFP lets you easily copy both sides of a card (ID cards, credit cards, etc.) onto a single page.



## Office Direct Printing\*

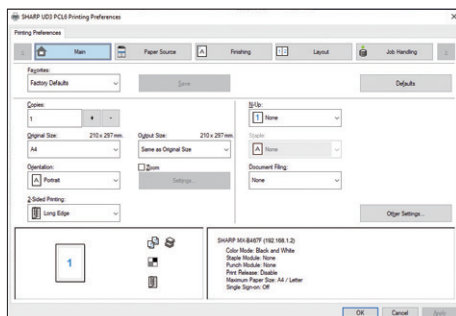
Print common Microsoft® Office files without using a PC. With this MFP, you can print a Word, Excel®, or PowerPoint® file directly from a mobile device, USB drive, or file server.

\* The actual printout may look different from what is displayed on the computer screen.



## Printer Driver with Easy Setup

The printer driver setup window features a simple design that includes larger buttons and drop-down menus, making it easier than ever to use printer functions.



## Security

Built-in security features keep your information safe, whether it's in a document, on the device, or over your network. Print Hold waits for your command at the control panel before printing. And Confidential Print requires a PIN before printing.

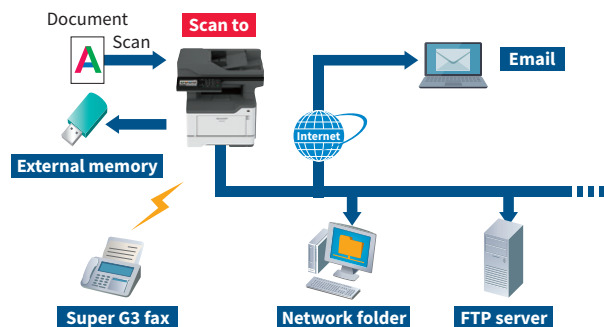
## Quick Scanning

The MFP comes equipped with a highly efficient 50-sheet DSPF (duplex single pass feeder), which scans both pages of two-sided documents in one pass. With a scanning speed of up to 42 opm\* (one-sided) or 84 opm\* (two-sided), the MFP can finish even large projects quickly.

\* Originals per minute; when feeding A4 sheets in B/W; 45 ppm (one-sided) or 90 opm (two-sided) for 8 1/2" x 11" sheets in B/W.

## Multiple Scan Destinations

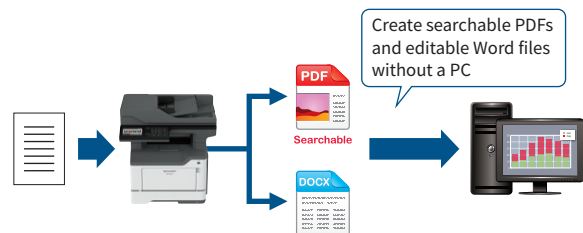
Scanned documents can be distributed in a number of ways. For example, they can be sent as email attachments or they can be scanned directly to an FTP server for storage. An optional compact PDF function ensures that PDF files are sent and received smoothly.



## Convert Documents via OCR\*

Optional OCR capability on this MFP lets you convert a scanned document into a searchable PDF file or into an editable Microsoft® Office Word file. This means you can do speedy text searches, even with large-volume documents, and you can easily copy and paste text data into other applications.

\* Requires optional OCR and HDD. Contact a Sharp customer representative for details.



## Business Card Management

Creating and managing a database of business cards is easy with this MFP. It reads contact details on each card via OCR and then exports those details to a third-party contact management system of your choice.

## Convenient Faxing

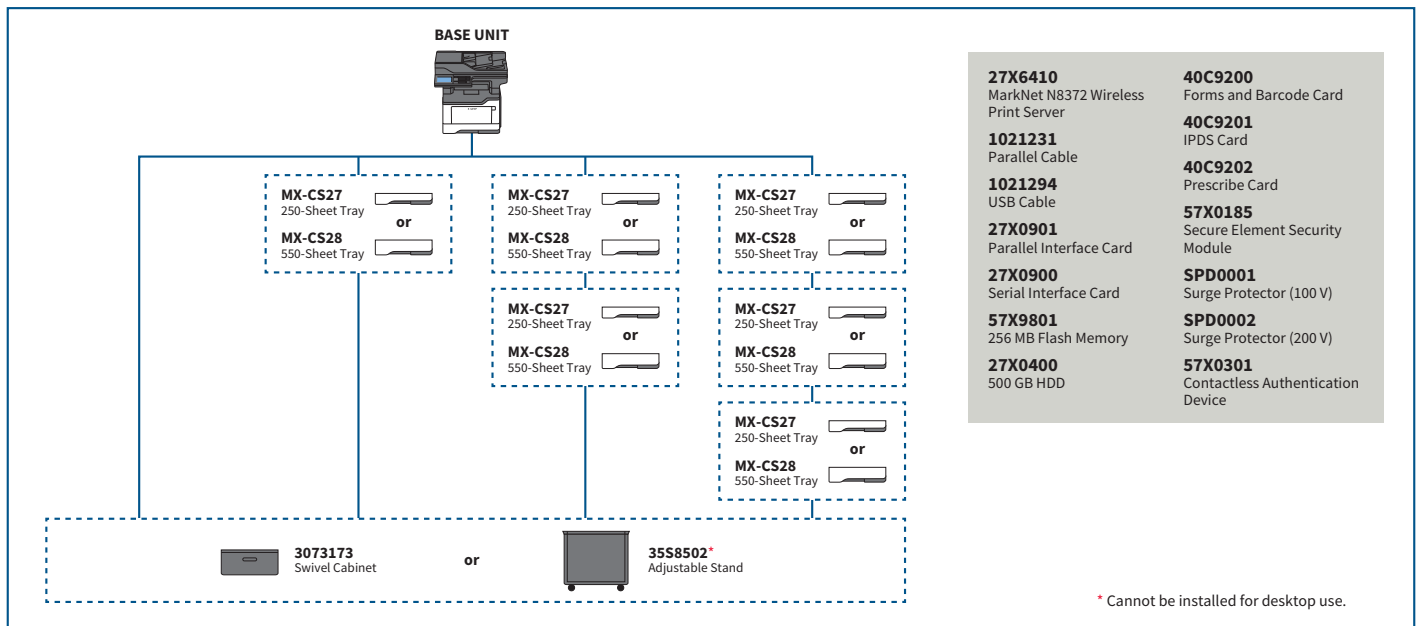
The MFP supports colour faxes, paperless faxing, and other convenient functions. You can forward faxes to a pre-designated location, such as an FTP server, network folder, or email. This means you can check faxes even when you're out of the office. You can also block junk faxes, allowing you to save on wasted paper and toner. And, for extra security, you can hold incoming fax data and print it out at a time that suits you.



## SPECIFICATIONS

General		Printer	
Type	Desktop	Resolution	1,200 x 1,200 dpi, 2,400 Image Quality, 1,200 Image Quality, 600 x 600 dpi
Engine speed	A4*1: Max. 44 ppm 8 1/2" x 11"*1: Max. 46 ppm	Interface	USB 2.0 (host, high-speed), 10Base-T/100Base-TX/1000Base-T, wireless LAN (IEEE 802.11 a/ac/b/g/n)*8
Control panel display	4.3-inch colour LCD touchscreen	Supported OS	Windows Server® 2008, Windows Server® 2008 R2, Windows Server® 2012, Windows Server® 2012 R2, Windows Server® 2016, Windows Server® 2019, Windows® 7, Windows® 8.1, Windows® 10 Mac OS 10.10, 10.11, 10.12, 10.13, 10.14, 10.15
Paper size	Max. A4 (8 1/2" x 14"), min. A6 (3" x 5")	Network protocols	TCP/IP
Paper capacity (75 g/m²)	Standard: 350 sheets (250-sheet tray and 100-sheet multipurpose feeder) Maximum: 2,000 sheets (350 sheets & optional 550-sheet tray x 3)	Printing protocols	LPD, Raw TCP (port 9100), enhanced IP (port 9400), FTP, TFTP, IPP
Paper weight	Trays 1-4: 60 g/m² to 120 g/m² (16 lbs bond to 32 lbs bond) Multipurpose feeder: 60 g/m² to 216 g/m² (16 lbs bond to 58 lbs bond)	PDL	PCL 5e/PCL 6 emulation, PostScript® 3™ emulation
Memory	Standard: 2 GB Option: 500 GB HDD*2	Available fonts	89 fonts for PCL, 158 fonts for PostScript 3 emulation
Dimensions (W x D x H)	489 x 429.5 x 477 mm (19.3" x 16.9" x 18.8")	Facsimile	
Weight (approx.)	20.6 kg (45.5 lbs)	Compression method	MH/MR/MMR/JBIG/JBIG2/JPEG
Copier		Communication protocol	Super G3/G3
Original paper size	Max. A4 (8 1/2" x 14")	Transmission time	Less than 3 seconds*9
First copy time*3	6 sec.	Modem speed	33,600 bps to 2,400 bps with automatic fallback
Continuous copy	Max. 9,999 copies	Transmission resolution	B/W: From Standard to Ultra Fine Colour: From Fine to Super Fine
Resolution	Max. 600 x 600 dpi	Recording size	A4 to A6 (8 1/2" x 14" to 5 1/2" x 8 1/2")
Zoom range	25% to 400% in 1% increments	Memory	18 MB (built-in)*10
Preset copy ratios	6 ratios (2R/4E)	<p>*1: Short-edge feeding.</p> <p>*2: HDD capacity depends on procurement and sourcing status.</p> <p>*3: Short-edge feeding of A4 (8 1/2" x 11") sheets from 1st paper tray, using document glass, MFP in fully ready condition. May vary depending on operating conditions and environment.</p> <p>*4: Scan speed will vary depending on the type of document, scan settings, operating conditions, and environment.</p> <p>*5: Requires optional HDD.</p> <p>*6: Colour/greyscale only.</p> <p>*7: Requires optional OCR with HDD. Contact a Sharp customer representative for details.</p> <p>*8: Optional.</p> <p>*9: Based on ITU-T test chart #1 at 33,600 bps.</p> <p>*10: Faxes are stored on an optional HDD (if installed). Fax storage is 1 GB less than total HDD capacity.</p> <p>• Design and specifications are subject to change without prior notice.</p> <p>• Wi-Fi Direct® is a registered trademark of Wi-Fi Alliance®. AirPrint, Apple, macOS, and Mac are trademarks of Apple Inc., registered in the US and other countries. Microsoft, Excel, PowerPoint, Windows Server, and Windows are either registered trademarks or trademarks of Microsoft Corporation in the US and/or other countries. PCL is a registered trademark of Hewlett-Packard Company. PostScript 3 is either a registered trademark or trademark of Adobe in the US and/or other countries. All other brand names and product names may be trademarks or registered trademarks of their respective owners.</p>	
Scanner			
Scan method	Push scan (via control panel) Pull scan (TWAIN-compliant application)		
Scan speed**	[A4 colour] One-sided: Max. 22 originals/min. Two-sided: Max. 44 originals/min. [A4 B/W] One-sided: Max. 42 originals/min. Two-sided: Max. 84 originals/min. [8 1/2" x 11" colour] One-sided: Max. 24 originals/min. Two-sided: Max. 48 originals/min. [8 1/2" x 11" B/W] One-sided: Max. 45 originals/min. Two-sided: Max. 90 originals/min.		
Resolution	Push scan: 75, 150, 200, 300, 400, 600 dpi Pull scan: 75, 150, 200, 300, 400, 600 dpi		
File formats	TIFF, PDF, PDF/A-1a, PDF/A-1b, encrypted PDF, XPS, compact PDF*5*6, JPEG*6, searchable PDF*7, DOCX*7, CSV*7, text (TXT)*7, rich text (RTF)*7		
Scan destinations	Scan to email/FTP server/USB drive/network folder (SMB)/HDD*5		

## SYSTEM CONFIGURATION



Certain optional equipment may not be available in some areas.

Distributed by:

# SHARP